

The site plan for Oyster Haven Apartments illustrates the layout of various building types and their units. The plan includes setbacks, property lines, and adjacent features like a pool and pavilion. Key streets shown are Oyster Isle Drive, Oyster Haven Alley, Seaglass Street, and Inlet Ave. The plan also indicates the location of the CWS Pump Station and the neighboring Nowell Creek Village Apartment Building(s). Specific setbacks and fire separation distances are noted throughout the plan.

Setbacks:

- SE11
- SE10
- SE10 (SHADED)
- SE10
- SE10 (SHADED)

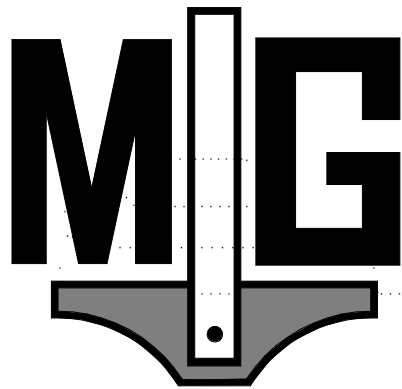
Building Types and Units:

- BUILDING TYPE 1:** 729 (UNIT B), 728 (UNIT A), 727 (UNIT A), 725 (UNIT A), 723 (UNIT A), 721 (UNIT B)
- BUILDING TYPE 2:** 769 (UNIT B), 767 (UNIT A), 765 (UNIT A), 763 (UNIT A), 761 (UNIT B)
- BUILDING TYPE 3:** 771 (UNIT D), 773 (UNIT C), 775 (UNIT D), 770 (UNIT B), 772 (UNIT A), 774 (UNIT B)
- BUILDING TYPE 4:** 760 (UNIT B), 762 (UNIT A), 764 (UNIT A), 766 (UNIT A), 768 (UNIT B)
- BUILDING TYPE 5:** 735 (UNIT D), 733 (UNIT C), 731 (UNIT D)
- BUILDING TYPE 6:** 747 (UNIT D), 745 (UNIT C), 743 (UNIT C), 741 (UNIT D)
- BUILDING TYPE 7:** 746 (UNIT F), 744 (UNIT E), 742 (UNIT E), 740 (UNIT F), 736 (UNIT F), 734 (UNIT E), 732 (UNIT E), 730 (UNIT F), 726 (UNIT F), 724 (UNIT E), 722 (UNIT E), 720 (UNIT F)

Other Features:

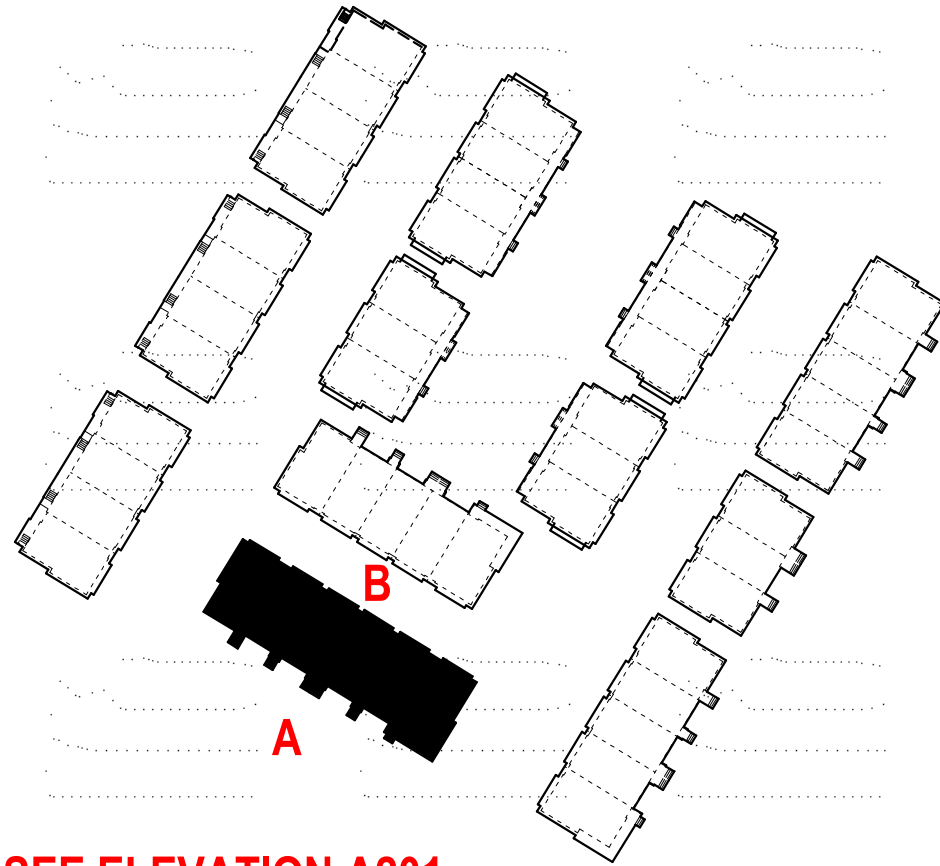
- POOL
- PAVILLION
- CWS PUMP STATION
- NEIGHBORING NOWELL CREEK VILLAGE-APARTMENT BUILDING(S)
- PROPERTY LINE
- SE11
- SE10
- SE10 (SHADED)
- SE10
- SE10 (SHADED)





The Middleton Group
4289 Spruill Avenue Suite 100,
N. Charleston, SC 29405
THEMIDDLETONGROUP.NET

SITE KEY PLAN



"X" - SEE ELEVATION A201



1
A208
OPP.

A OVERALL FRONT ELEVATION- BUILDING TYPE 1

A201 1/8" = 1'-0"



1
A210
OPP.

B OVERALL REAR ELEVATION- BUILDING TYPE 1

A201 1/8" = 1'-0"



NOWELL CREEK VILLAGE
TOWNHOMES
CHARLESTON, SC

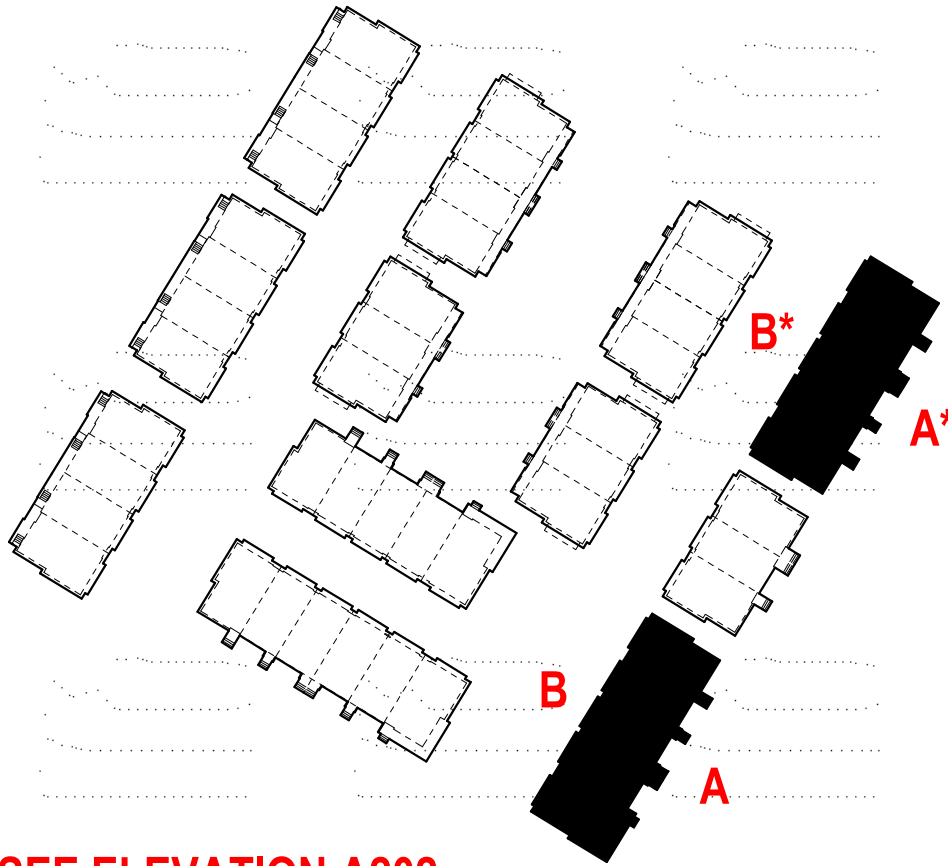
Project Number	22018	
Issued for Review	XX.XX.2023	
Issued for Permit	XX.XX.2023	
Issued for Construction	XX.XX.2023	
Revisions		
No.	Description	Date

OVERALL ELEVATIONS-
BUILDING TYPE 1

A201



SITE KEY PLAN



"X" - SEE ELEVATION A202

DEVIATION NOTES

A* THIS BUILDING IS MIRRORED WITHOUT THE CORNER WRAP-AROUND PORCH. THE ENTRANCE IS TO BE COVERED WITH SAME SINGLE AWNING AS REMAINDER OF BUILDING ENTRANCES.
B*



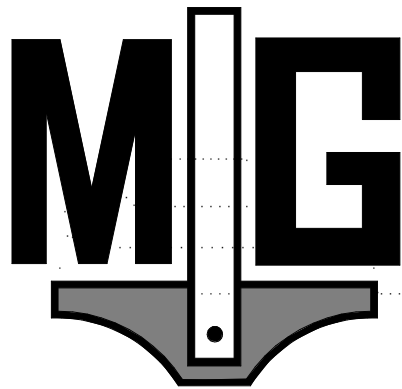
A OVERALL FRONT ELEVATION- BUILDING TYPE 2

A202 1/8" = 1'-0"

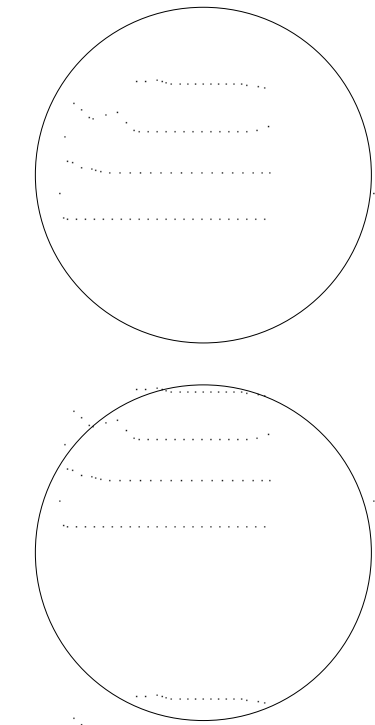


B OVERALL REAR ELEVATION- BUILDING TYPE 2

A202 1/8" = 1'-0"



The Middleton Group
4289 Spruill Avenue Suite 100,
N. Charleston, SC 29405
THEMIDDLETONGROUP.NET



DI ARB FINAL REVIEW SUBMISSION
08.23.2023



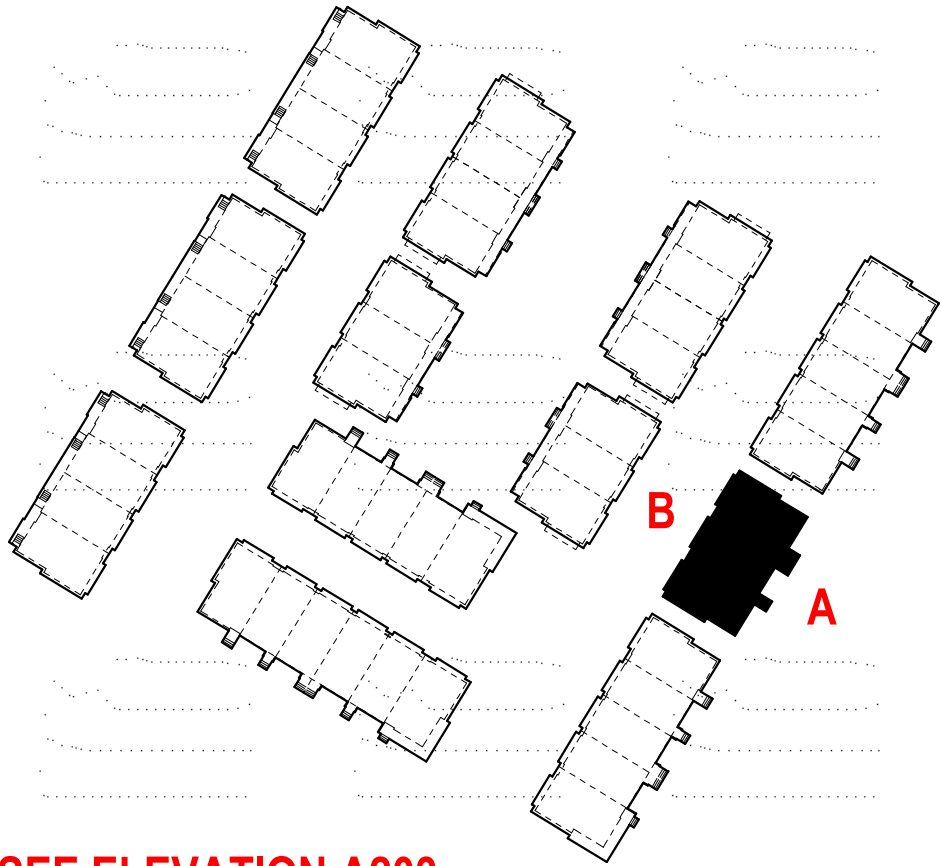
NOWELL CREEK VILLAGE
TOWNHOMES
CHARLESTON, SC

Project Number	22018	
Issued for Review	XX.XX.2023	
Issued for Permit	XX.XX.2023	
Issued for Construction	XX.XX.2023	
Revisions		
No.	Description	Date

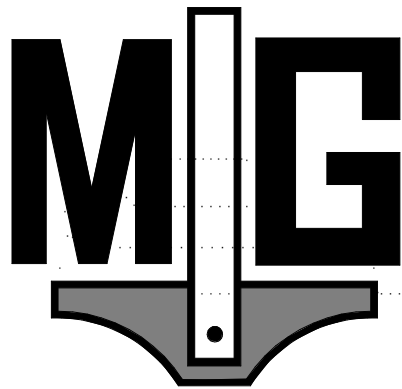
OVERALL ELEVATIONS-
BUILDING TYPE 2

A202

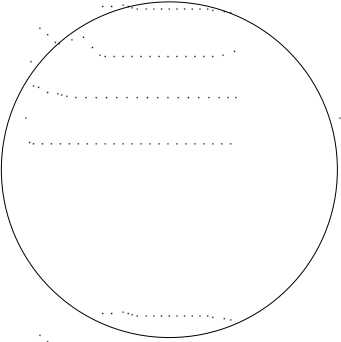
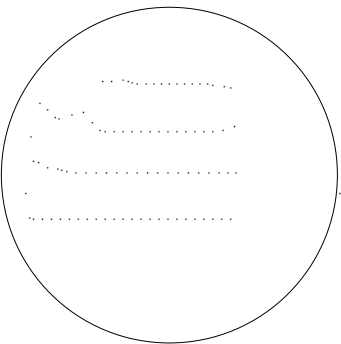
SITE KEY PLAN



"X" - SEE ELEVATION A203



The Middleton Group
4289 Spruill Avenue Suite 100,
N. Charleston, SC 29405
THEMIDDLETONGROUP.NET



DI ARB FINAL REVIEW SUBMISSION
08.23.2023



NOWELL CREEK VILLAGE
TOWNHOMES
CHARLESTON, SC

Project Number	22018	
Issued for Review	XX.XX.2023	
Issued for Permit	XX.XX.2023	
Issued for Construction	XX.XX.2023	
Revisions		
No.	Description	Date

OVERALL ELEVATIONS-
BUILDING TYPE 3

A203

8/18/2023 8:54:34 AM

1
A208 NO PORCH



A OVERALL FRONT ELEVATION- BUILDING TYPE 3

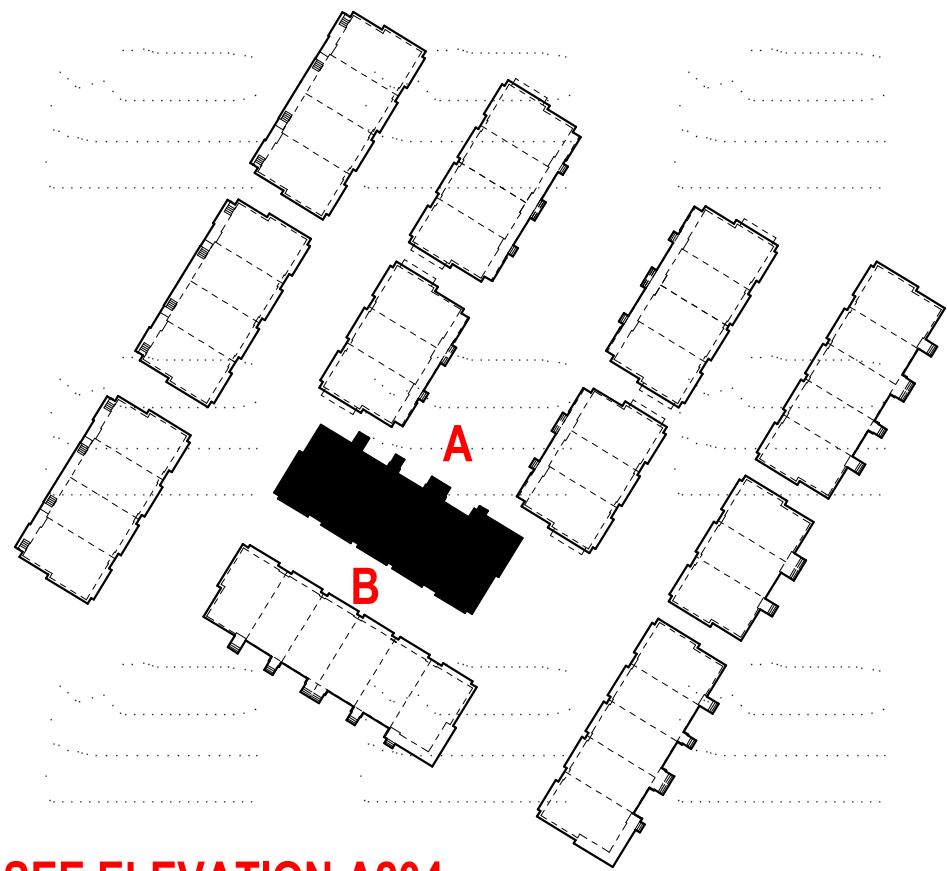
A203 1/8" = 1'-0"



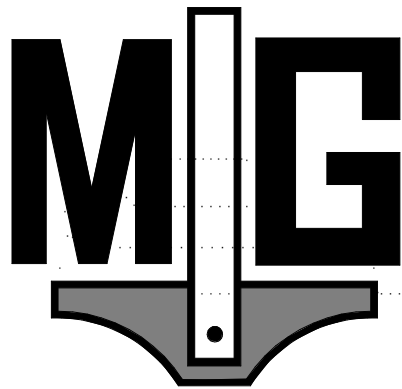
B OVERALL REAR ELEVATION- BUILDING TYPE 3

A203 1/8" = 1'-0"

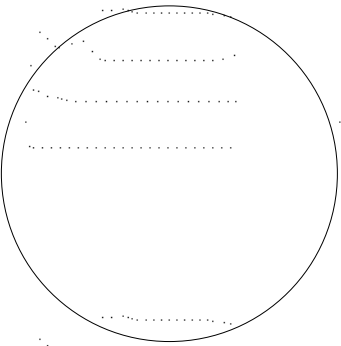
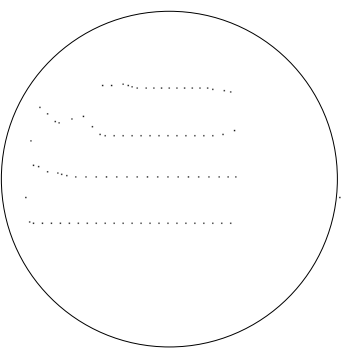
SITE KEY PLAN



"X" - SEE ELEVATION A204



The Middleton Group
4289 Spruill Avenue Suite 100,
N. Charleston, SC 29405
THEMIDDLETONGROUP.NET



DI ARB FINAL REVIEW SUBMISSION
08.23.2023



NOWELL CREEK VILLAGE
TOWNHOMES
CHARLESTON, SC

Project Number	22018	
Issued for Review	XX.XX.2023	
Issued for Permit	XX.XX.2023	
Issued for Construction	XX.XX.2023	
Revisions		
No.	Description	Date

OVERALL ELEVATIONS-
BUILDING TYPE 4

A204

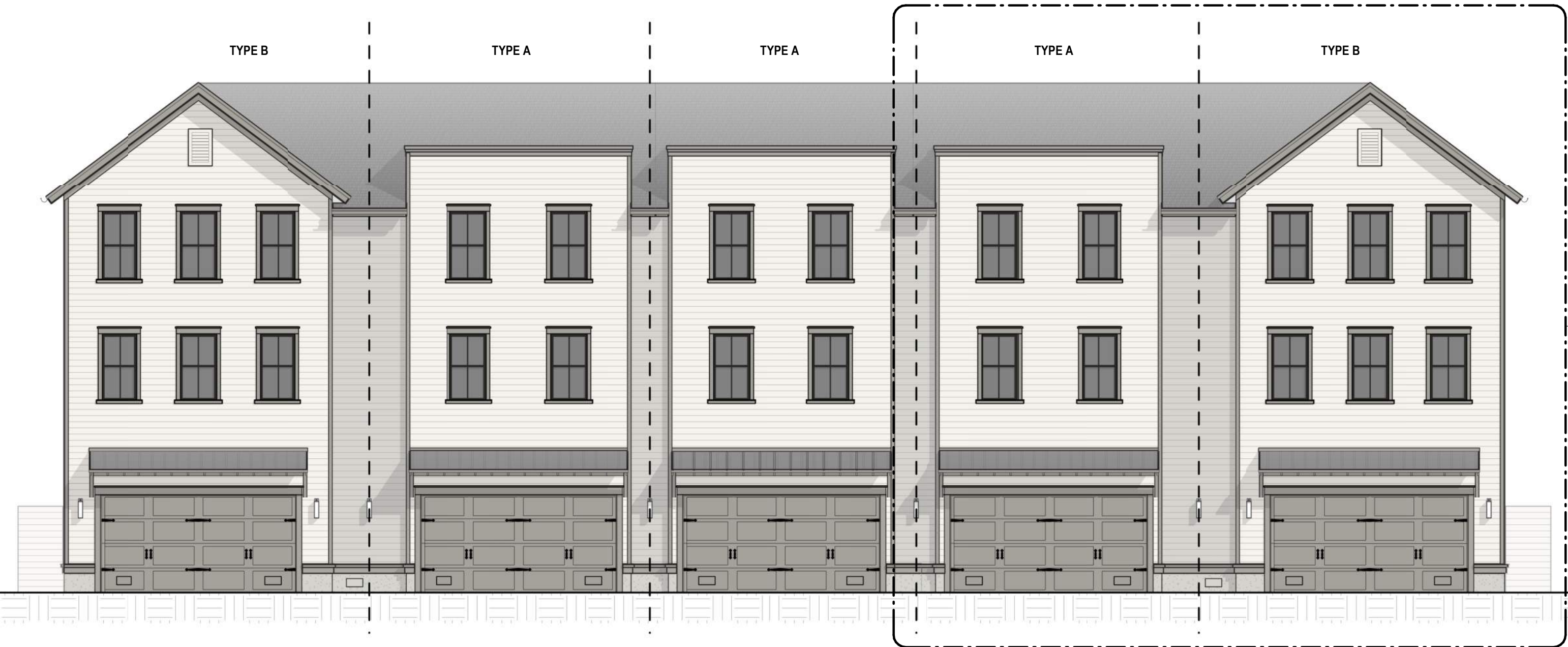
8/18/2023 8:35:02 AM

1
A208
NO PORCH



A OVERALL FRONT ELEVATION- BUILDING TYPE 4

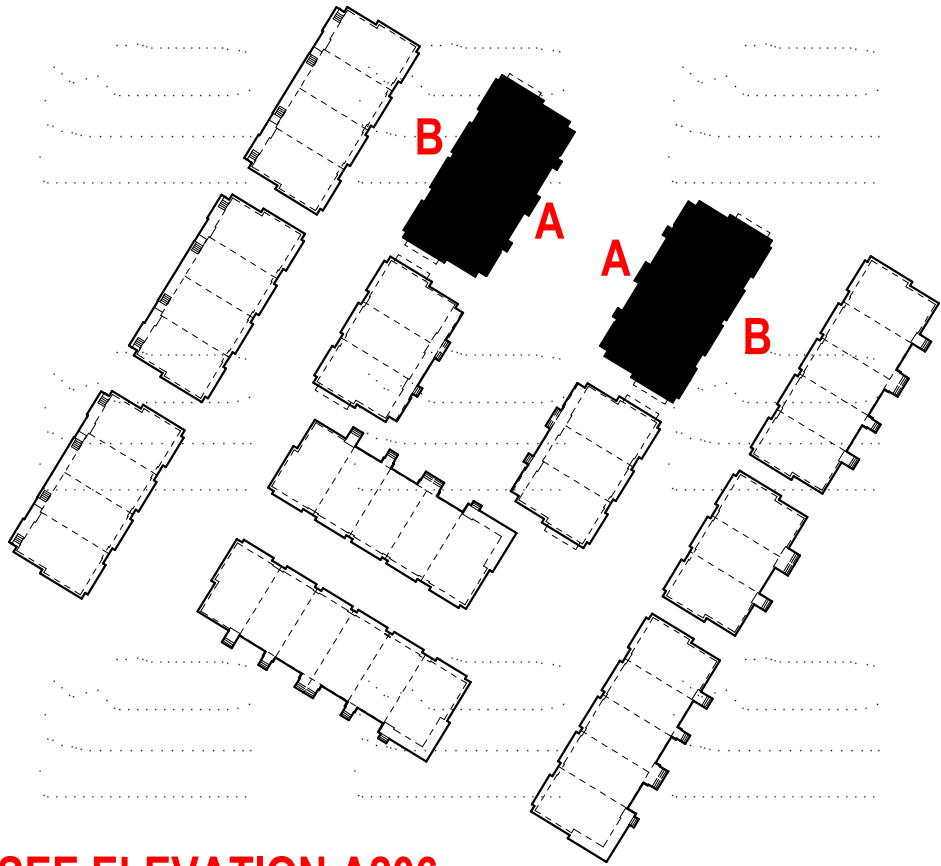
A204 1/8" = 1'-0"



B OVERALL REAR ELEVATION- BUILDING TYPE 4

A204 1/8" = 1'-0"

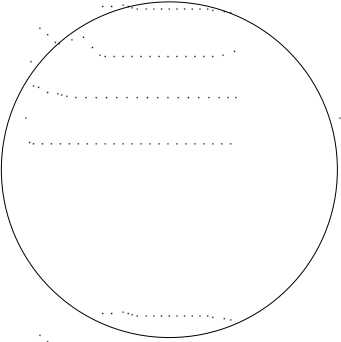
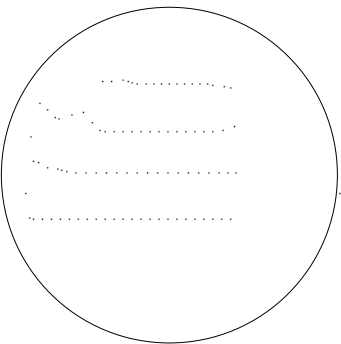
SITE KEY PLAN



"X" - SEE ELEVATION A206



The Middleton Group
4289 Spruill Avenue Suite 100,
N. Charleston, SC 29405
THEMIDDLETONGROUP.NET



DI ARB FINAL REVIEW SUBMISSION
08.23.2023



NOWELL CREEK VILLAGE
TOWNHOMES
CHARLESTON, SC

Project Number	22018	
Issued for Review	XX.XX.2023	
Issued for Permit	XX.XX.2023	
Issued for Construction	XX.XX.2023	
Revisions		
No.	Description	Date

OVERALL ELEVATIONS-
BUILDING TYPE 6

A206

8/18/2023 8:35:43 AM



A OVERALL FRONT ELEVATION- BUILDING TYPE 6

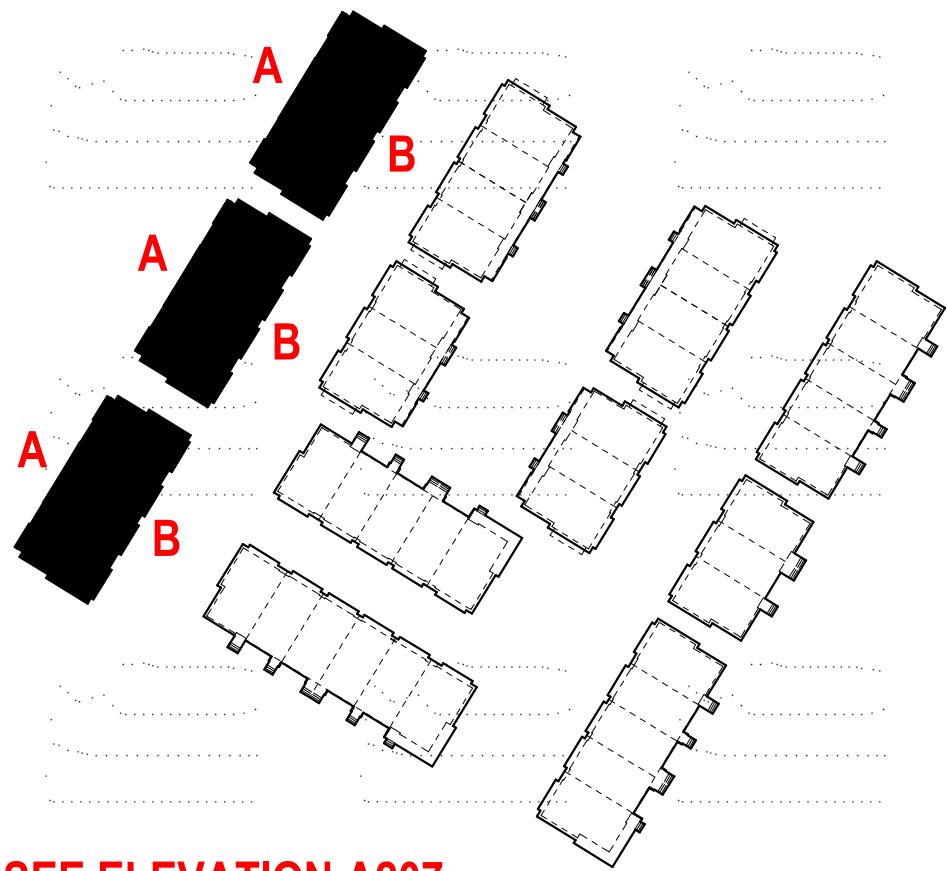
A206 1/8" = 1'-0"



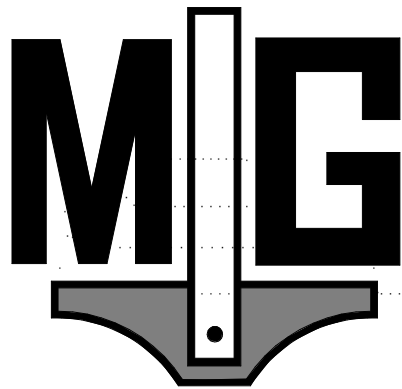
B OVERALL REAR ELEVATION- BUILDING TYPE 6

A206 1/8" = 1'-0"

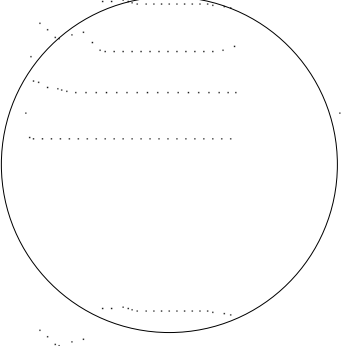
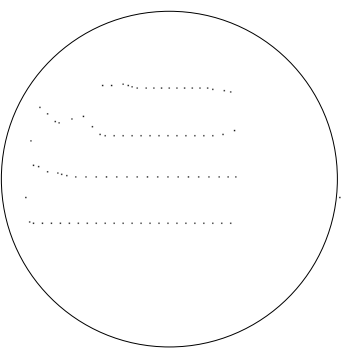
SITE KEY PLAN



"X" - SEE ELEVATION A207



The Middleton Group
4289 Spruill Avenue Suite 100,
N. Charleston, SC 29405
THEMIDDLETONGROUP.NET



DI ARB FINAL REVIEW SUBMISSION
08.23.2023



NOWELL CREEK VILLAGE
TOWNHOMES
CHARLESTON, SC

Project Number	22018	
Issued for Review	XX.XX.2023	
Issued for Permit	XX.XX.2023	
Issued for Construction	XX.XX.2023	
Revisions		
No.	Description	Date

OVERALL ELEVATIONS-
BUILDING TYPE 7

A207

8/18/2023 8:36:09 AM



A OVERALL FRONT ELEVATION- BUILDING TYPE 7

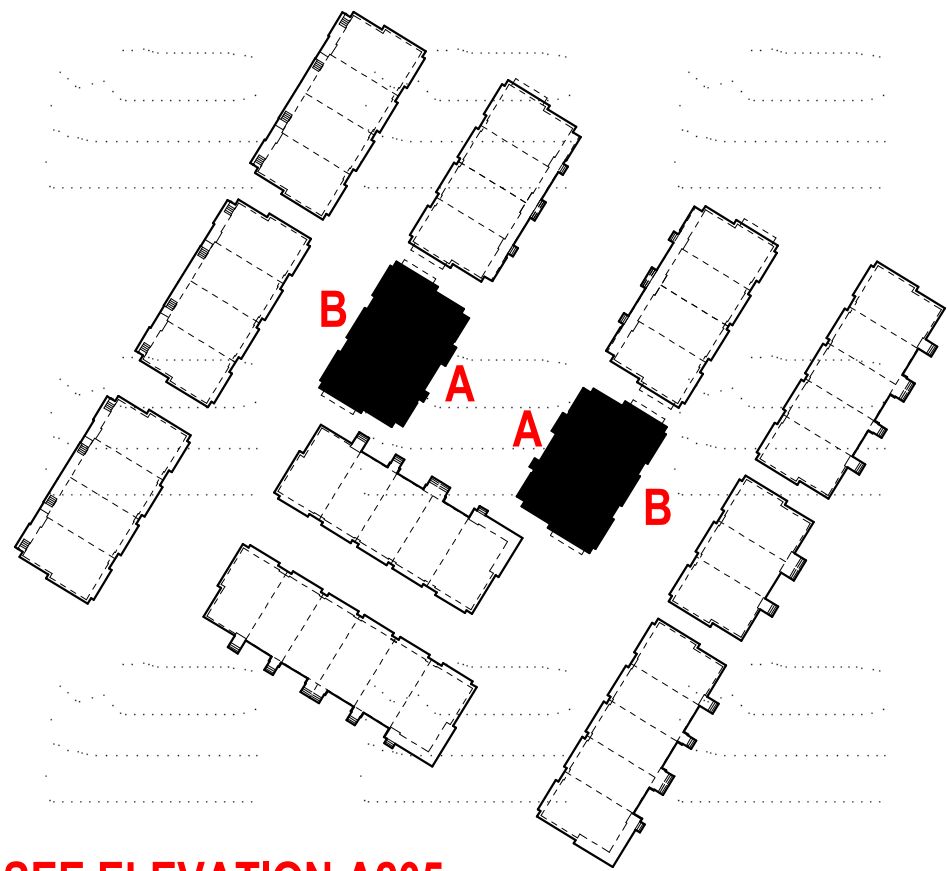
A207 1/8" = 1'-0"



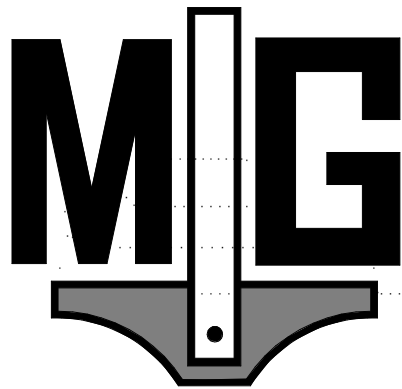
B OVERALL REAR ELEVATION- BUILDING TYPE 7

A207 1/8" = 1'-0"

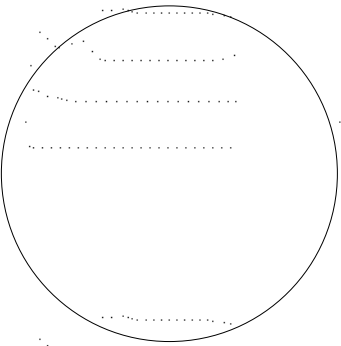
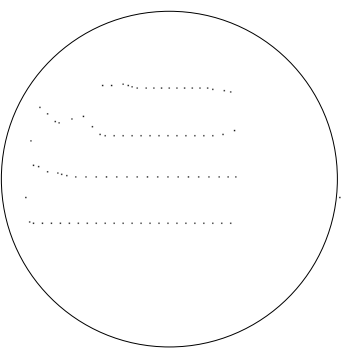
SITE KEY PLAN



"X" - SEE ELEVATION A205



The Middleton Group
4289 Spruill Avenue Suite 100,
N. Charleston, SC 29405
THEMIDDLETONGROUP.NET



DI ARB FINAL REVIEW SUBMISSION
08.23.2023



NOWELL CREEK VILLAGE
TOWNHOMES
CHARLESTON, SC

Project Number	22018
Issued for Review	XXXX.2023
Issued for Permit	XXXX.2023
Issued for Construction	XX.XX.2023

Revisions		
No.	Description	Date

OVERALL ELEVATIONS-
BUILDING TYPE 5

A205

8/18/2023 8:35:19 AM



A OVERALL FRONT ELEVATION- BUILDING TYPE 5

A205 1/8" = 1'-0"



B OVERALL REAR ELEVATION- BUILDING TYPE 5

A205 1/8" = 1'-0"