

NOWELL CREEK APARTMENTS

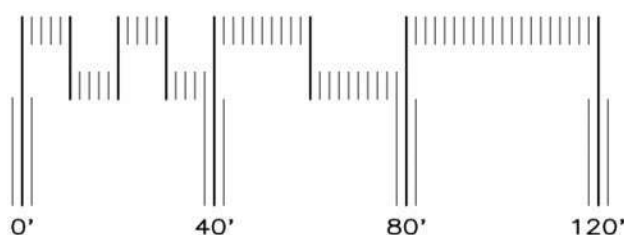
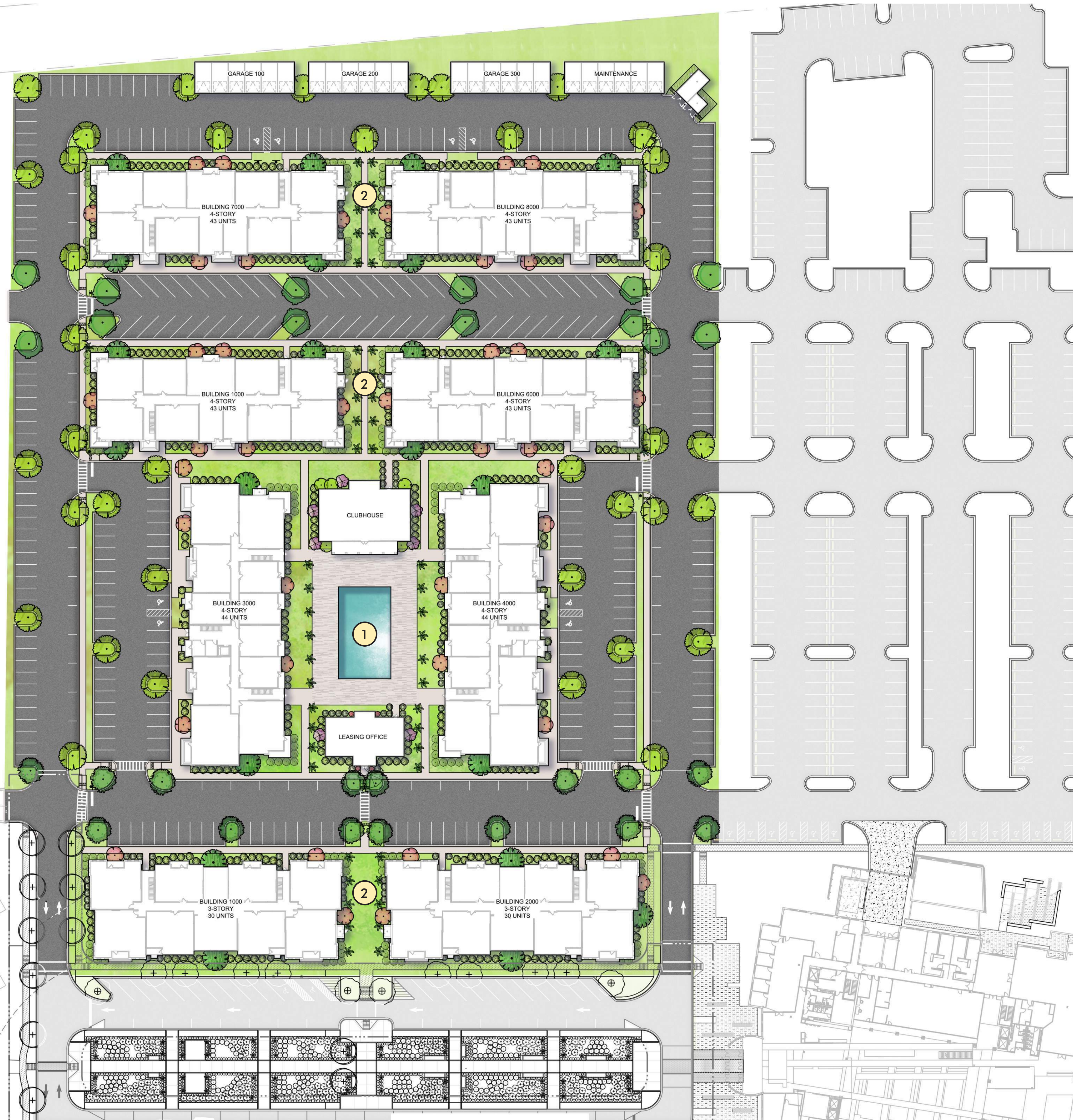
DANIEL ISLAND, CHARLESTON, SOUTH CAROLINA



LEGEND

1 POOL AMENITY

2 POCKET PARK



NOTE: THIS PLAN IS CONCEPTUAL IN NATURE AND SUBJECT TO CHANGE.



CONCEPTUAL SITE PLAN

CONCEPTUAL DESIGN REVIEW BOARD
 DANIEL ISLAND - CITY OF CHARLESTON,
 10.05.2021

BUILDINGS III & IV

These buildings anchor the long axis of the primary multi-family block. Their facades are organized around a rhythm of painted brick piers with graceful geometries. The balance of the exterior cladding is a combination of lap siding, board and batten, and flush dark painted shiplap. The corner porches are imaged as trellises at the fourth floor, and the roofline is modulated through the use of two shaped parapets and a step-down in the parapet over the central common entrance.



MIDDLE STREET
PARTNERS

DYNAMIK
DESIGN

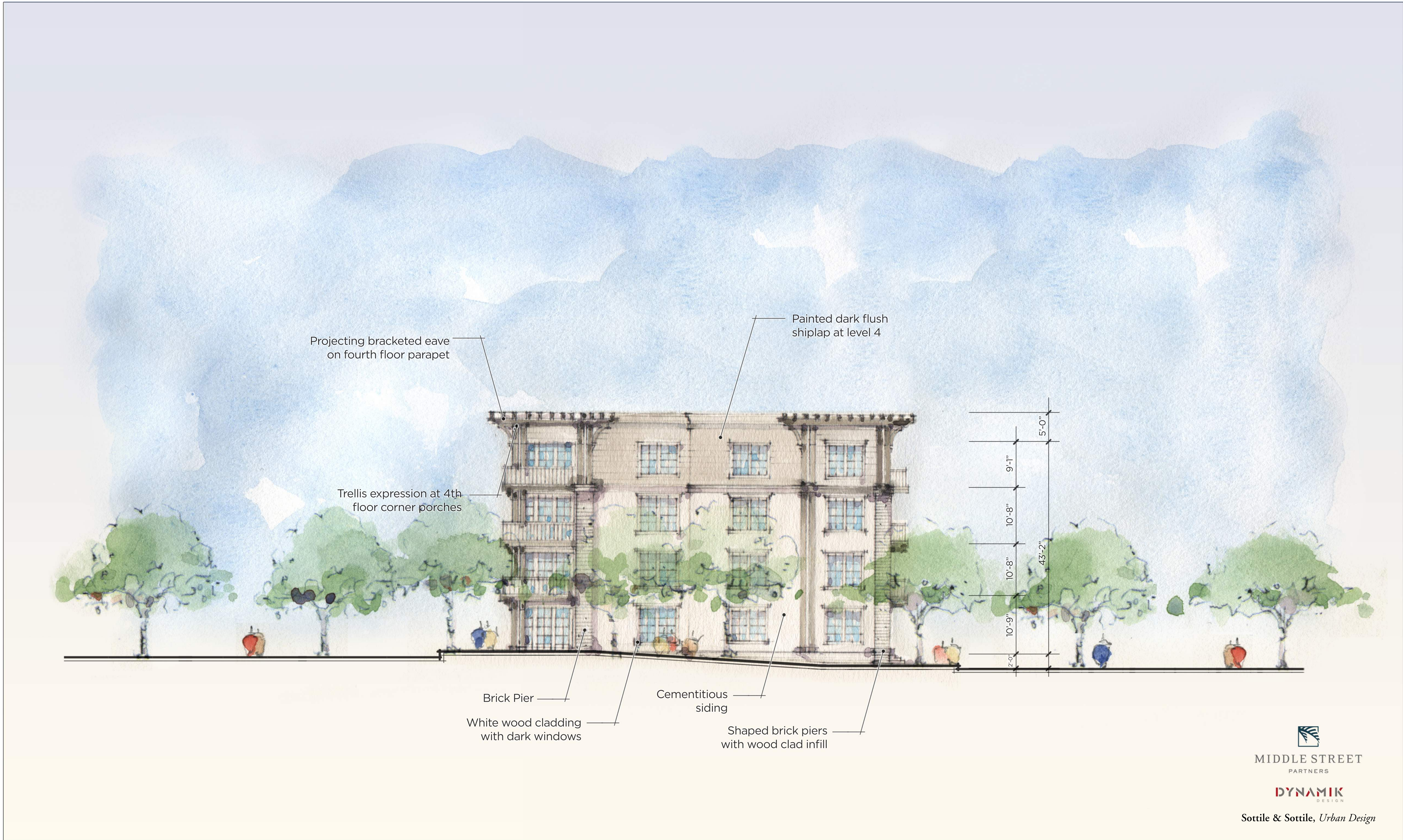
Sottile & Sottile, Urban Design

STREET ELEVATION (EAST/WEST) | BUILDINGS III & IV

Daniel Island | Charleston, South Carolina

Information contained herein is conceptual. Information has been compiled from various sources and does not claim complete accuracy nor guarantee zoning or other types of development approvals. It is intended to provide an overview and analysis of design conditions. Sottile & Sottile, 2021

NOWELL CREEK
DANIEL ISLAND
CHARLESTON, SOUTH CAROLINA



Information contained herein is conceptual. Information has been compiled from various sources and does not claim complete accuracy nor guarantee zoning or other types of development approvals. It is intended to provide an overview and analysis of design conditions. Sottile & Sottile, 2021

SIDE ELEVATION (NORTH/SOUTH) | BUILDINGS III & IV *Daniel Island | Charleston, South Carolina*

NOWELL CREEK
DANIEL ISLAND
CHARLESTON, SOUTH CAROLINA



Information contained herein is conceptual. Information has been compiled from various sources and does not claim complete accuracy nor guarantee zoning or other types of development approvals. It is intended to provide an overview and analysis of design conditions. Sottile & Sottile, 2021

REAR ELEVATION (EAST/WEST) | BUILDINGS III & IV *Daniel Island | Charleston, South Carolina*

NOWELL CREEK
DANIEL ISLAND
CHARLESTON, SOUTH CAROLINA



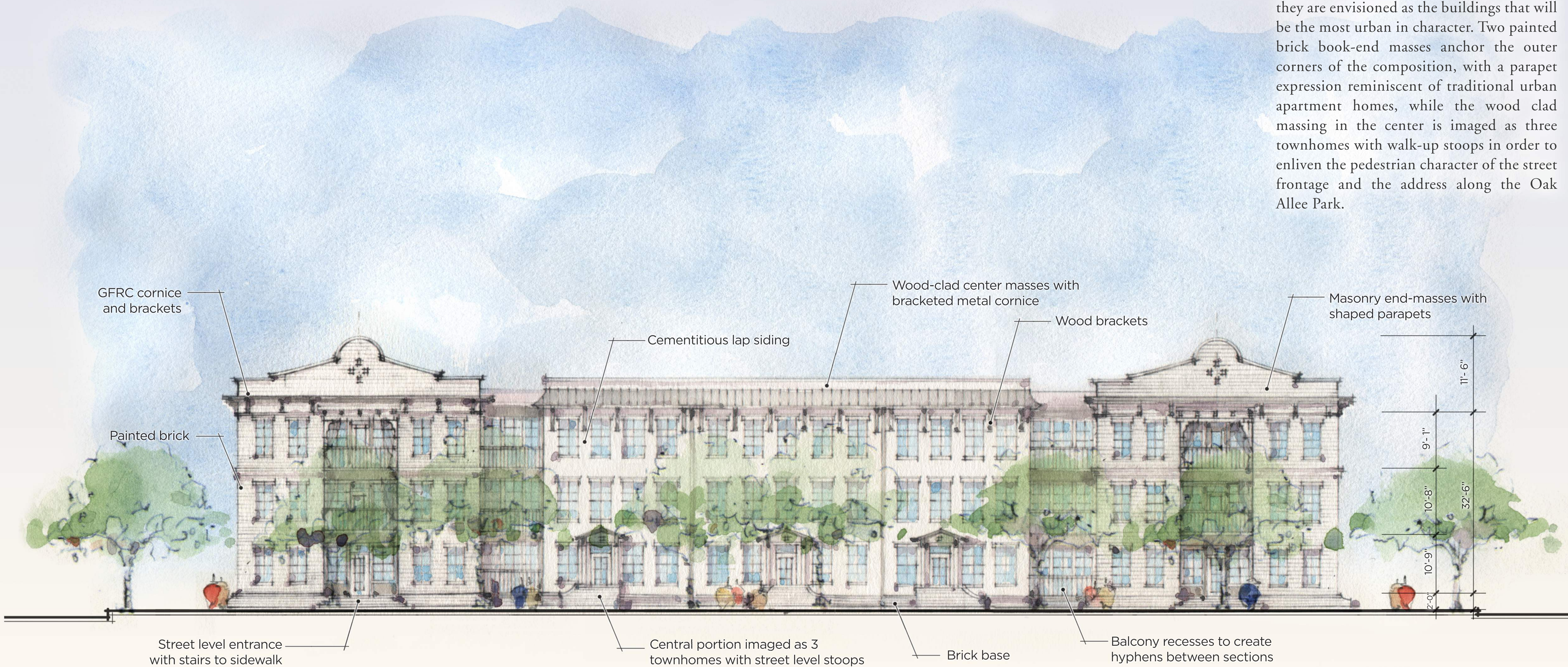
Information contained herein is conceptual. Information has been compiled from various sources and does not claim complete accuracy nor guarantee zoning or other types of development approvals. It is intended to provide an overview and analysis of design conditions. Sottile & Sottile, 2021

SIDE ELEVATION (NORTH/SOUTH) | BUILDINGS III & IV *Daniel Island | Charleston, South Carolina*

NOWELL CREEK
DANIEL ISLAND
CHARLESTON, SOUTH CAROLINA

BUILDINGS I & II

These buildings are the closest in proximity to the Office Building, the center of the Village and Daniel Island Drive. As such, they are envisioned as the buildings that will be the most urban in character. Two painted brick book-end masses anchor the outer corners of the composition, with a parapet expression reminiscent of traditional urban apartment homes, while the wood clad massing in the center is imaged as three townhomes with walk-up stoops in order to enliven the pedestrian character of the street frontage and the address along the Oak Allee Park.



MIDDLE STREET
PARTNERS

DYNAMIK
DESIGN

Sottile & Sottile, Urban Design

STREET ELEVATION (SOUTH) | BUILDINGS I & II
Daniel Island | Charleston, South Carolina

NOWELL CREEK
DANIEL ISLAND
CHARLESTON, SOUTH CAROLINA

Information contained herein is conceptual. Information has been compiled from various sources and does not claim complete accuracy nor guarantee zoning or other types of development approvals. It is intended to provide an overview and analysis of design conditions. Sottile & Sottile, 2021



Information contained herein is conceptual. Information has been compiled from various sources and does not claim complete accuracy nor guarantee zoning or other types of development approvals. It is intended to provide an overview and analysis of design conditions. Sottile & Sottile, 2021

SIDE ELEVATION (EAST/WEST) | BUILDINGS I & II *Daniel Island | Charleston, South Carolina*

NOWELL CREEK
DANIEL ISLAND
CHARLESTON, SOUTH CAROLINA



Information contained herein is conceptual. Information has been compiled from various sources and does not claim complete accuracy nor guarantee zoning or other types of development approvals. It is intended to provide an overview and analysis of design conditions. Sottile & Sottile, 2021

REAR ELEVATION (NORTH) | BUILDINGS I & II

Daniel Island | Charleston, South Carolina

NOWELL CREEK
 DANIEL ISLAND
 CHARLESTON, SOUTH CAROLINA



MIDDLE STREET
PARTNERS

DYNAMIK
DESIGN

Sottile & Sottile, Urban Design

Information contained herein is conceptual. Information has been compiled from various sources and does not claim complete accuracy nor guarantee zoning or other types of development approvals. It is intended to provide an overview and analysis of design conditions. Sottile & Sottile, 2021

SIDE ELEVATION (EAST/WEST) | BUILDINGS I & II *Daniel Island | Charleston, South Carolina*

NOWELL CREEK
DANIEL ISLAND
CHARLESTON, SOUTH CAROLINA

BUILDINGS V & VI

These buildings anchor the long axis of the primary multi-family block. Their facades are organized around a rhythm of painted brick piers with graceful geometries. The balance of the exterior cladding is a combination of lap siding, board and batten, and flush dark painted shiplap. The corner porches are imaged as trellises at the fourth floor, and the roofline is modulated through the use of two shaped parapets and a step-down in the parapet over the central common entrance.



MIDDLE STREET
PARTNERS

DYNAMIK
DESIGN

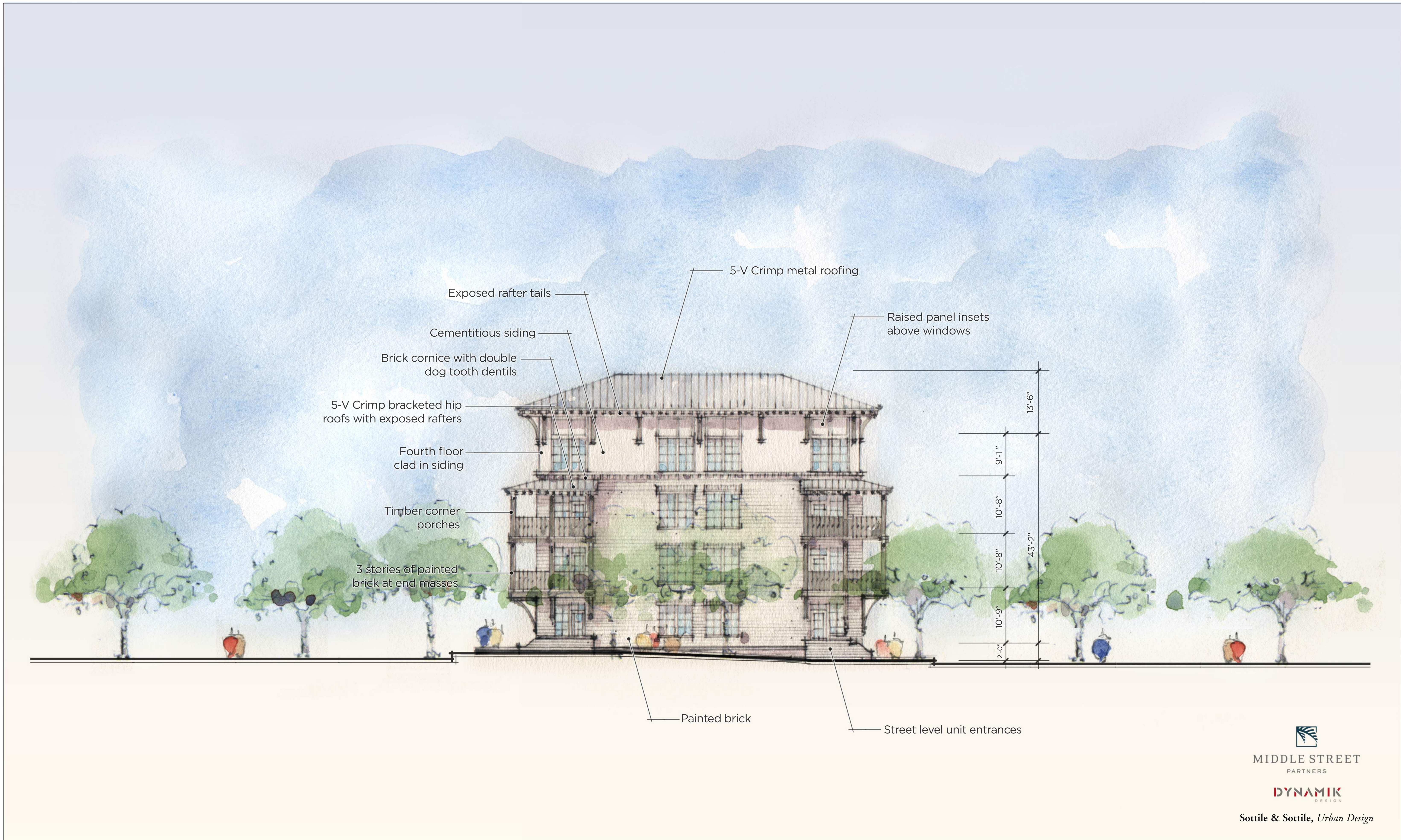
Sottile & Sottile, Urban Design

Information contained herein is conceptual. Information has been compiled from various sources and does not claim complete accuracy nor guarantee zoning or other types of development approvals. It is intended to provide an overview and analysis of design conditions. Sottile & Sottile, 2021

STREET ELEVATION (NORTH) | BUILDINGS V & VI

Daniel Island | Charleston, South Carolina

NOWELL CREEK
DANIEL ISLAND
CHARLESTON, SOUTH CAROLINA



Information contained herein is conceptual. Information has been compiled from various sources and does not claim complete accuracy nor guarantee zoning or other types of development approvals. It is intended to provide an overview and analysis of design conditions. Sottile & Sottile, 2021

SIDE ELEVATION (EAST/WEST) | BUILDINGS V & VI

Daniel Island | Charleston, South Carolina

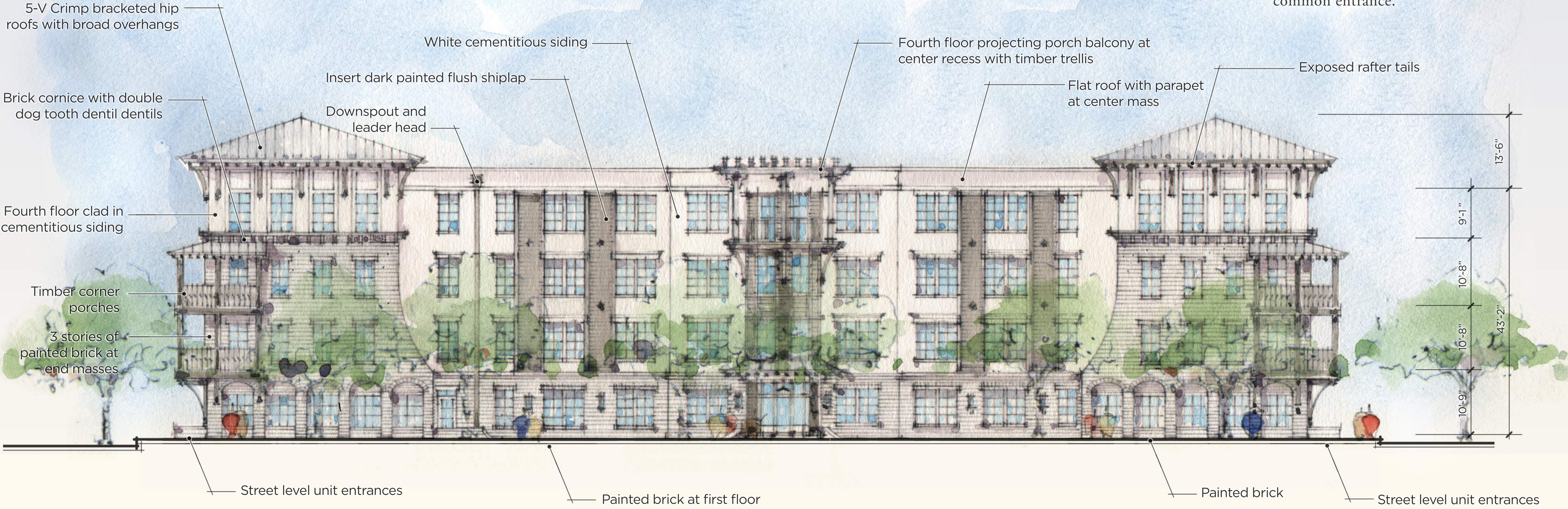
NOWELL CREEK

DANIEL ISLAND

CHARLESTON, SOUTH CAROLINA

BUILDINGS V & VI

These buildings anchor the long axis of the primary multi-family block. Their facades are organized around a rhythm of painted brick piers with graceful geometries. The balance of the exterior cladding is a combination of lap siding, board and batten, and flush dark painted shiplap. The corner porches are imaged as trellises at the fourth floor, and the roofline is modulated through the use of two shaped parapets and a step-down in the parapet over the central common entrance.



MIDDLE STREET
PARTNERS

DYNAMIK
DESIGN

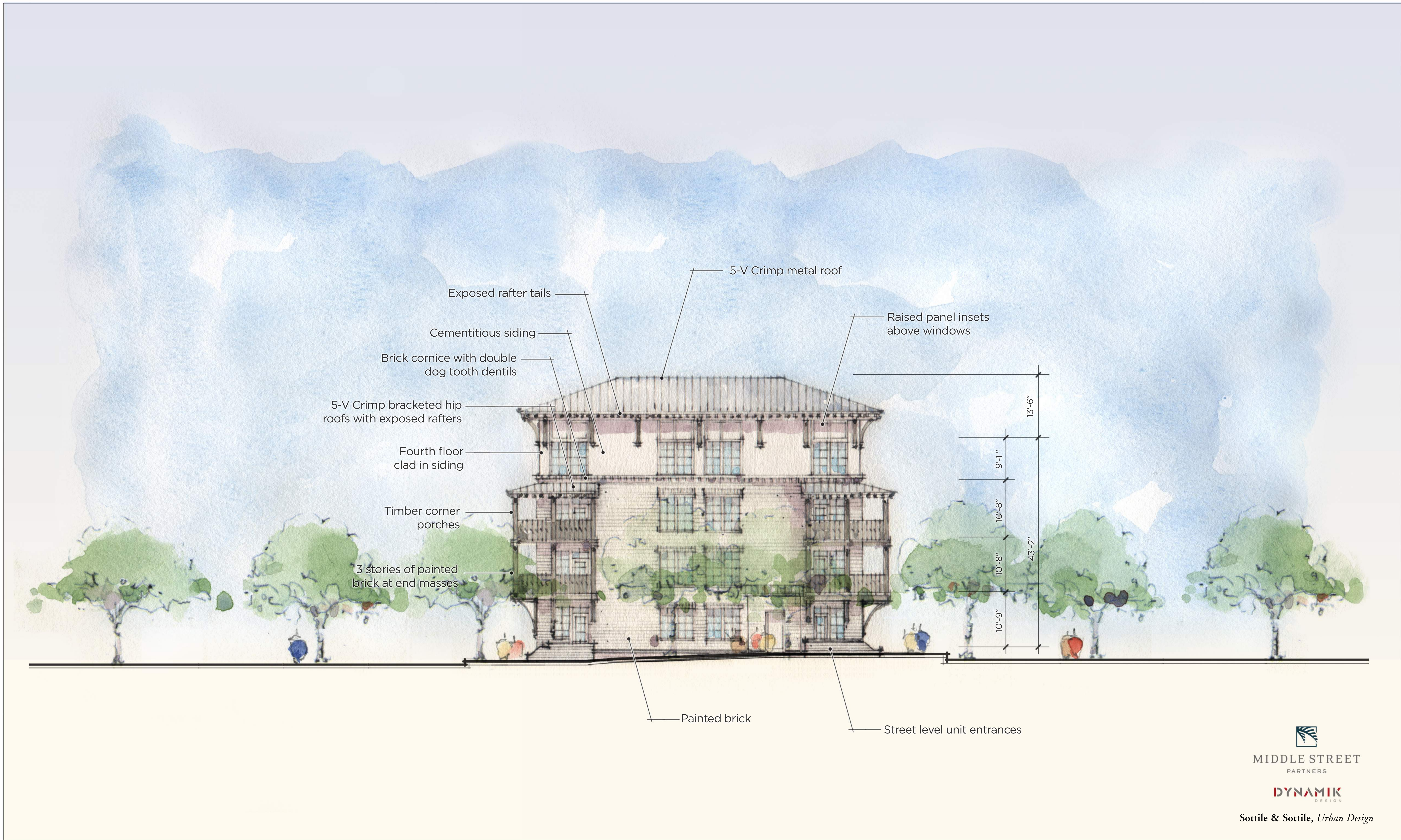
Sottile & Sottile, Urban Design

REAR ELEVATION (SOUTH) | BUILDINGS V & VI

Daniel Island | Charleston, South Carolina

NOWELL CREEK
DANIEL ISLAND
CHARLESTON, SOUTH CAROLINA

Information contained herein is conceptual. Information has been compiled from various sources and does not claim complete accuracy nor guarantee zoning or other types of development approvals. It is intended to provide an overview and analysis of design conditions. Sottile & Sottile, 2021



Information contained herein is conceptual. Information has been compiled from various sources and does not claim complete accuracy nor guarantee zoning or other types of development approvals. It is intended to provide an overview and analysis of design conditions. Sottile & Sottile, 2021

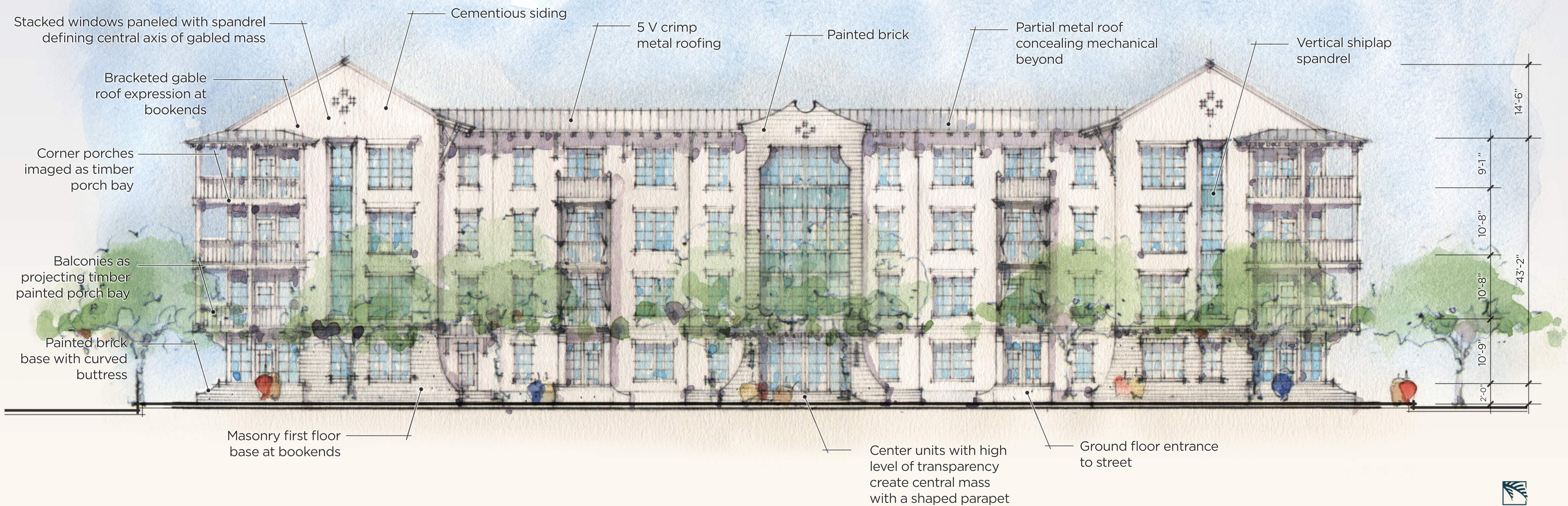
SIDE ELEVATION (EAST/WEST) | BUILDINGS V & VI

Daniel Island | Charleston, South Carolina

NOWELL CREEK
DANIEL ISLAND
CHARLESTON, SOUTH CAROLINA

BUILDINGS VII & VIII

As the northernmost apartment buildings in the master plan, and due to their direct proximity to the single family residential neighborhood, these buildings are the most residential in scale and expression. They feature painted brick on the first level of the bookend masses, two-pitched gables at the two ends define the expression from a distance. A wood parapet anchors the center, and a skirt roof along the intervening body reinforces the residential character embodied in the sloped roofs while screening mechanical equipment from view.



MIDDLE STREET
PARTNERS

DYNAMIK
DESIGN

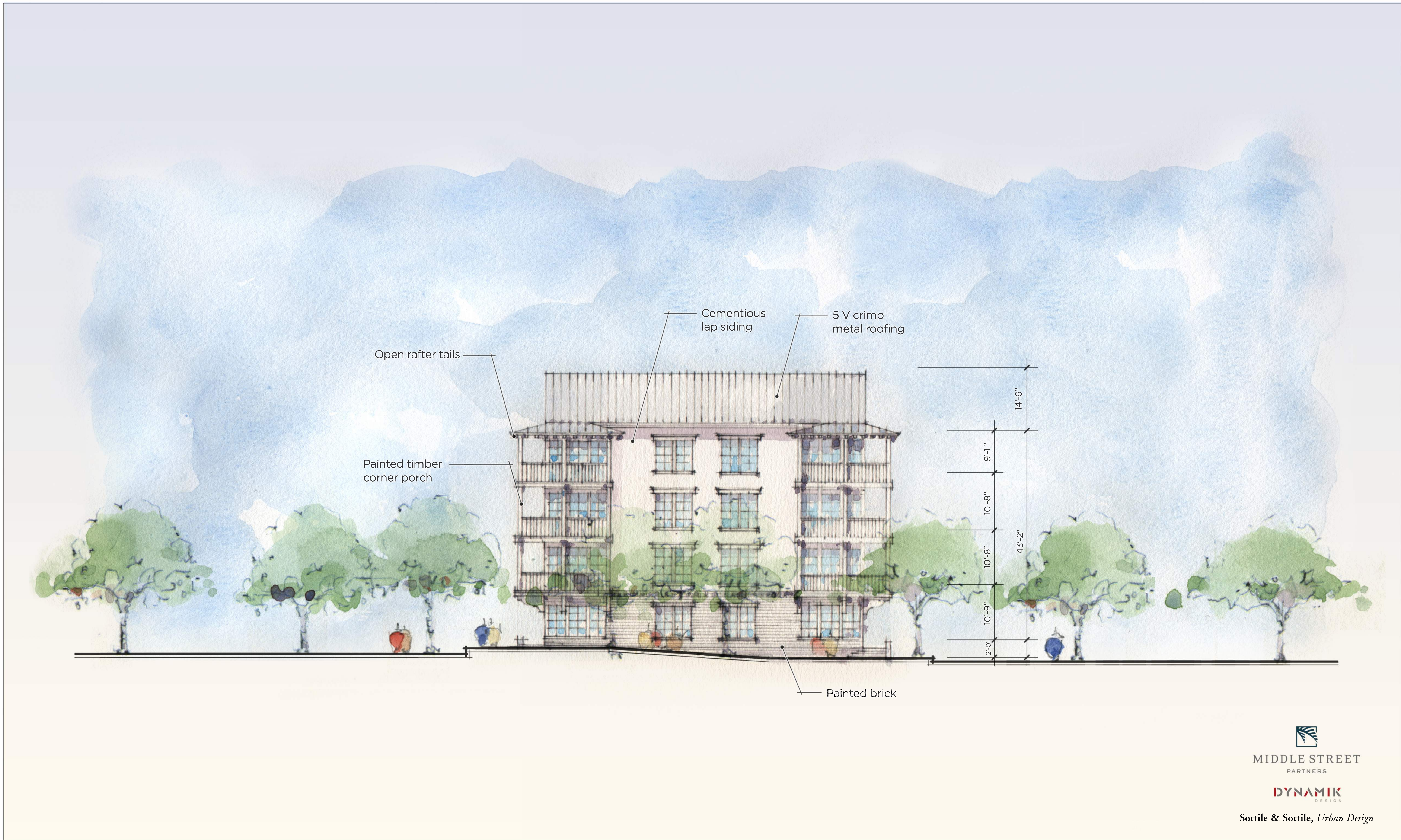
Sottile & Sottile, Urban Design

STREET ELEVATION (SOUTH) | BUILDINGS VII & VIII

Daniel Island | Charleston, South Carolina

Information contained herein is conceptual. Information has been compiled from various sources and does not claim complete accuracy nor guarantee zoning or other types of development approvals. It is intended to provide an overview and analysis of design conditions. Sottile & Sottile, 2021

NOWELL CREEK
DANIEL ISLAND
CHARLESTON, SOUTH CAROLINA



MIDDLE STREET
PARTNERS

DYNAMIK
DESIGN

Sottile & Sottile, Urban Design

SIDE ELEVATION (EAST/WEST) | BUILDINGS VII & VIII

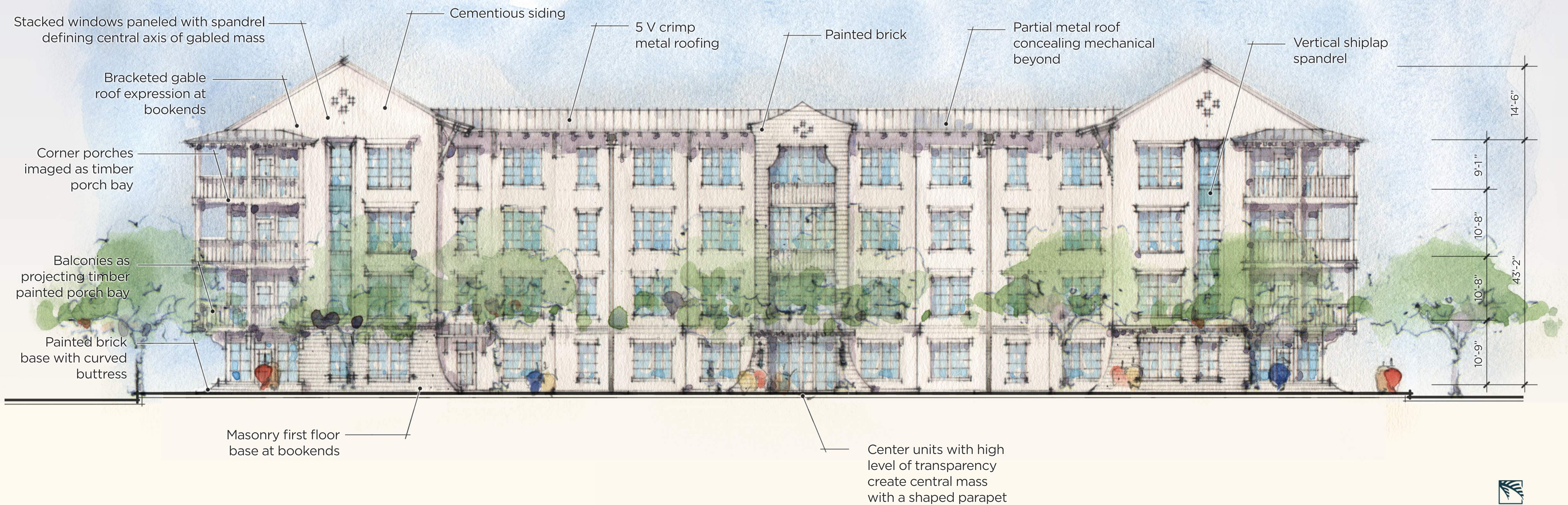
Daniel Island | Charleston, South Carolina

NOWELL CREEK
DANIEL ISLAND
CHARLESTON, SOUTH CAROLINA

Information contained herein is conceptual. Information has been compiled from various sources and does not claim complete accuracy nor guarantee zoning or other types of development approvals. It is intended to provide an overview and analysis of design conditions. Sottile & Sottile, 2021

BUILDINGS VII & VIII

As the northernmost apartment buildings in the master plan, and due to their direct proximity to the single family residential neighborhood, these buildings are the most residential in scale and expression. They feature painted brick on the first level of the bookend masses, two-pitched gables at the two ends define the expression from a distance. A wood parapet anchors the center, and a skirt roof along the intervening body reinforces the residential character embodied in the sloped roofs while screening mechanical equipment from view.



MIDDLE STREET
PARTNERS

DYNAMIK
DESIGN

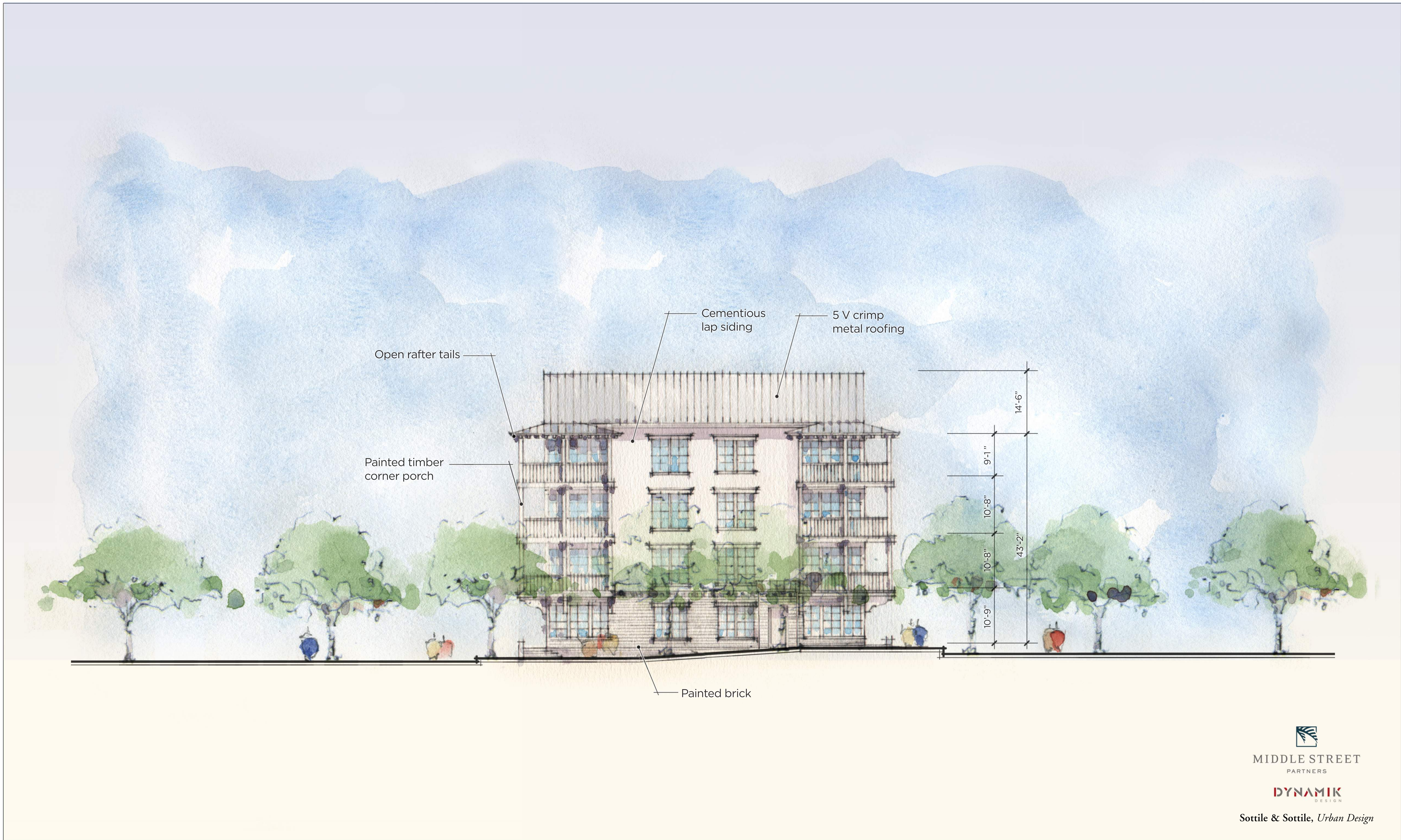
Sottile & Sottile, Urban Design

Information contained herein is conceptual. Information has been compiled from various sources and does not claim complete accuracy nor guarantee zoning or other types of development approvals. It is intended to provide an overview and analysis of design conditions. Sottile & Sottile, 2021

REAR ELEVATION (NORTH) | BUILDINGS VII & VIII

Daniel Island | Charleston, South Carolina

NOWELL CREEK
DANIEL ISLAND
CHARLESTON, SOUTH CAROLINA



MIDDLE STREET
PARTNERS

DYNAMIK
DESIGN

Sottile & Sottile, Urban Design

SIDE ELEVATION (EAST/WEST) | BUILDINGS VII & VIII

Daniel Island | Charleston, South Carolina

NOWELL CREEK
DANIEL ISLAND
CHARLESTON, SOUTH CAROLINA

Information contained herein is conceptual. Information has been compiled from various sources and does not claim complete accuracy nor guarantee zoning or other types of development approvals. It is intended to provide an overview and analysis of design conditions. Sottile & Sottile, 2021