
Developer Update

Planning Commission Mtg – 11/20/19

Three Zoning Amendments:

1. Communications towers allowed in certain zones (for much needed improvement in cell phone coverage on island)
2. Indoor athletic facilities allowed (presently only outside facilities permitted)
3. Increased building coverage in Business Park zone

Subdivision approval for parcel “FF”

**DINA & DI incumbent and incoming City Council members have reviewed all of the above*

Island Statistics

Completed or started to date:

Single family homes completed or under construction	2,702
Multi-Family Residential units completed to date	2,843
Total residential units completed to date	<u>5,545</u>

Remaining Residential Units to be Built:

Controlled by Daniel Island Company	
Single-family in Daniel Island Park	222
Single - family in Daniel Island Community Association	83
Multi-family site	250
	<u>555</u>
Controlled by other land owners	
Single-family in Daniel Island Town Association	110
Multi-family in Daniel Island Town Association	424
	<u>534</u>
Total remaining residences to be built	<u>1,089</u>
Total Projected Units at Build Out	<u><u>6,634</u></u>

City of Charleston approved density cap is 7,500 residential units

Downtown Development



The Waterfront



www.thewaterfrontdi.com

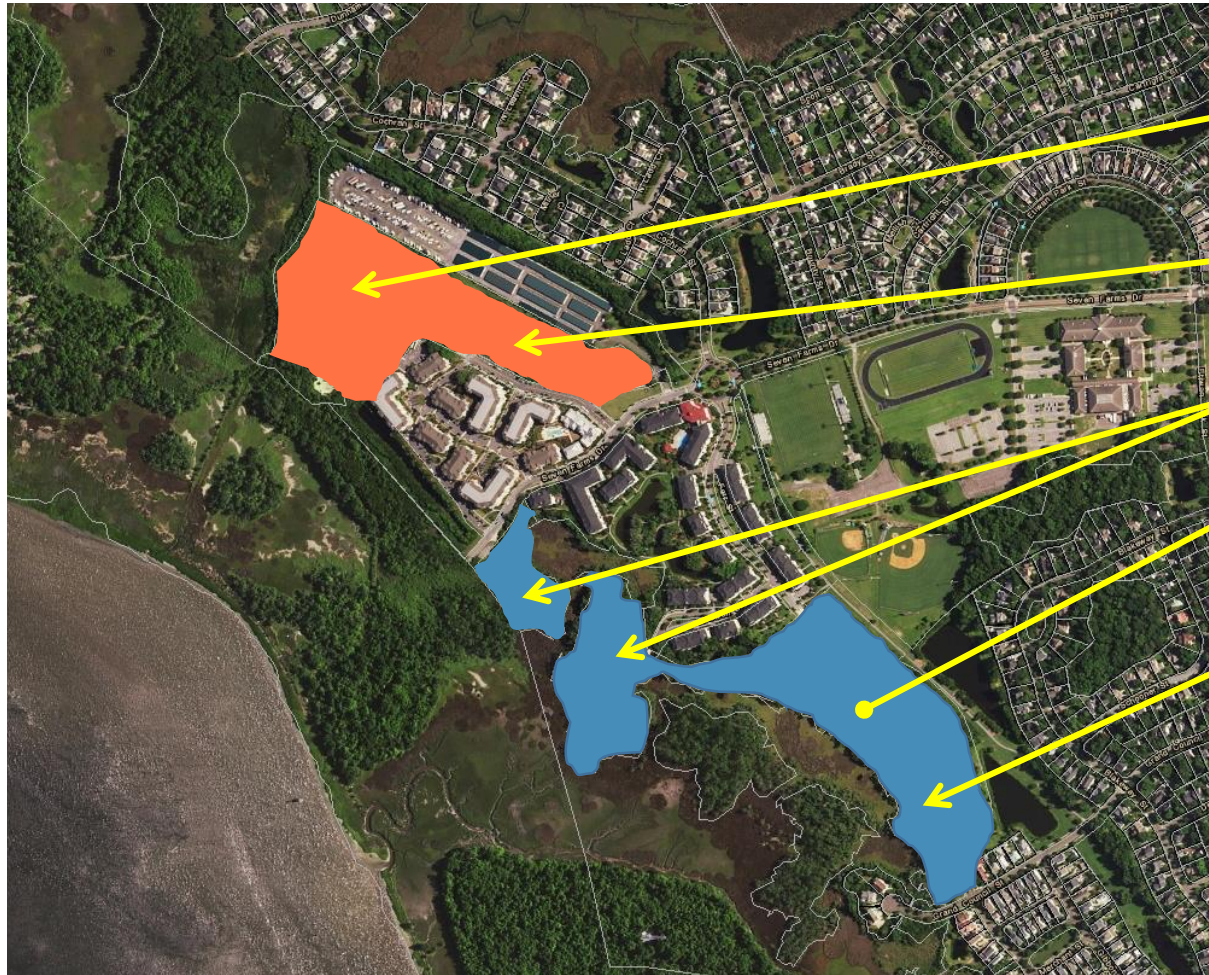
Waterfront village with mix of condominiums and townhomes now under construction.

To include retail, dining and enhanced public park space, waterfront access.

Developed by East West Partners.

58 residences in first phase offered next year.

DI South



Commercial/
Storage Expansion

Proposed Active
Recreation

Future Residential

Overture
Independent Living

Limited Residential

Residential

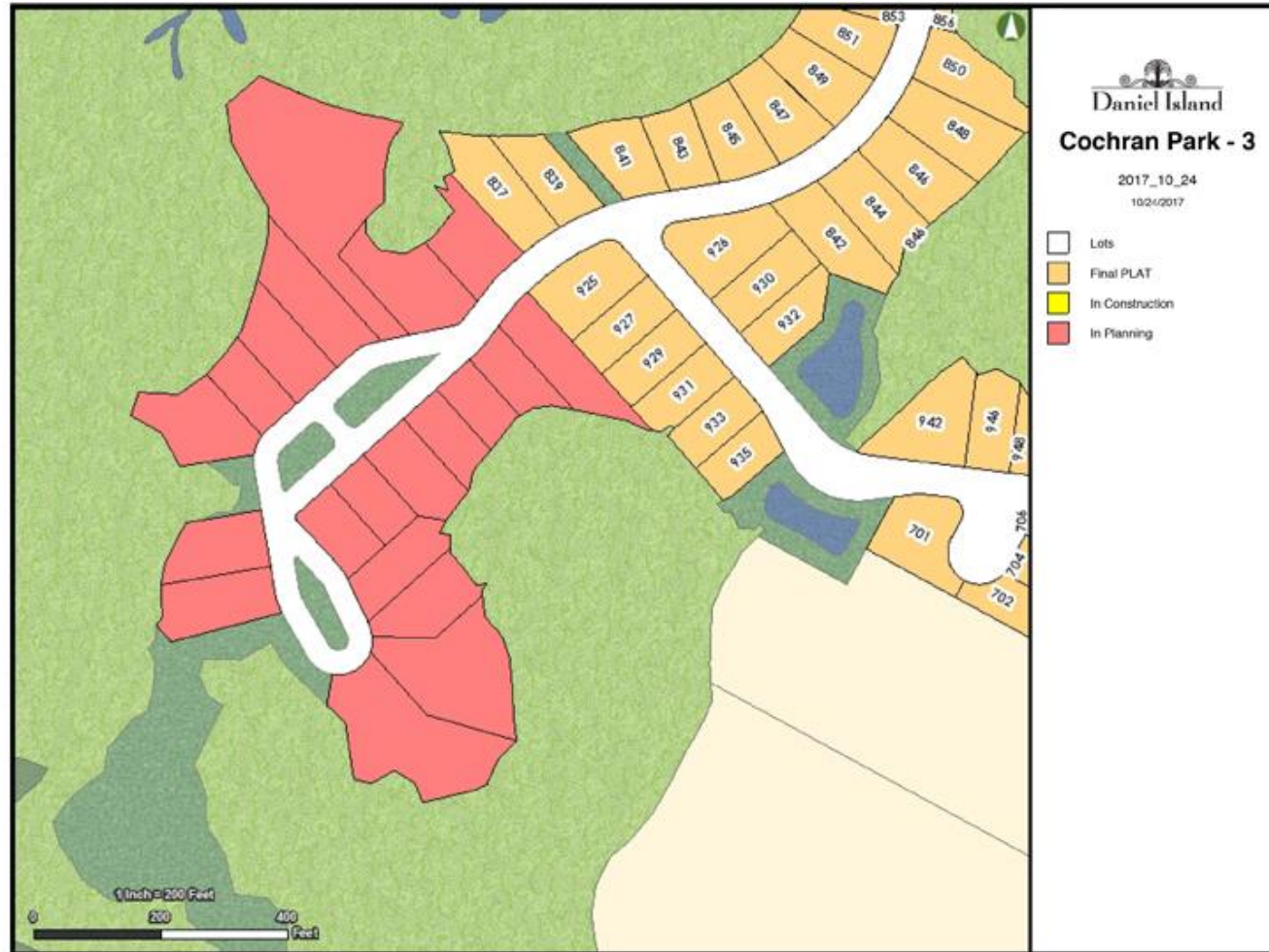


Business Park



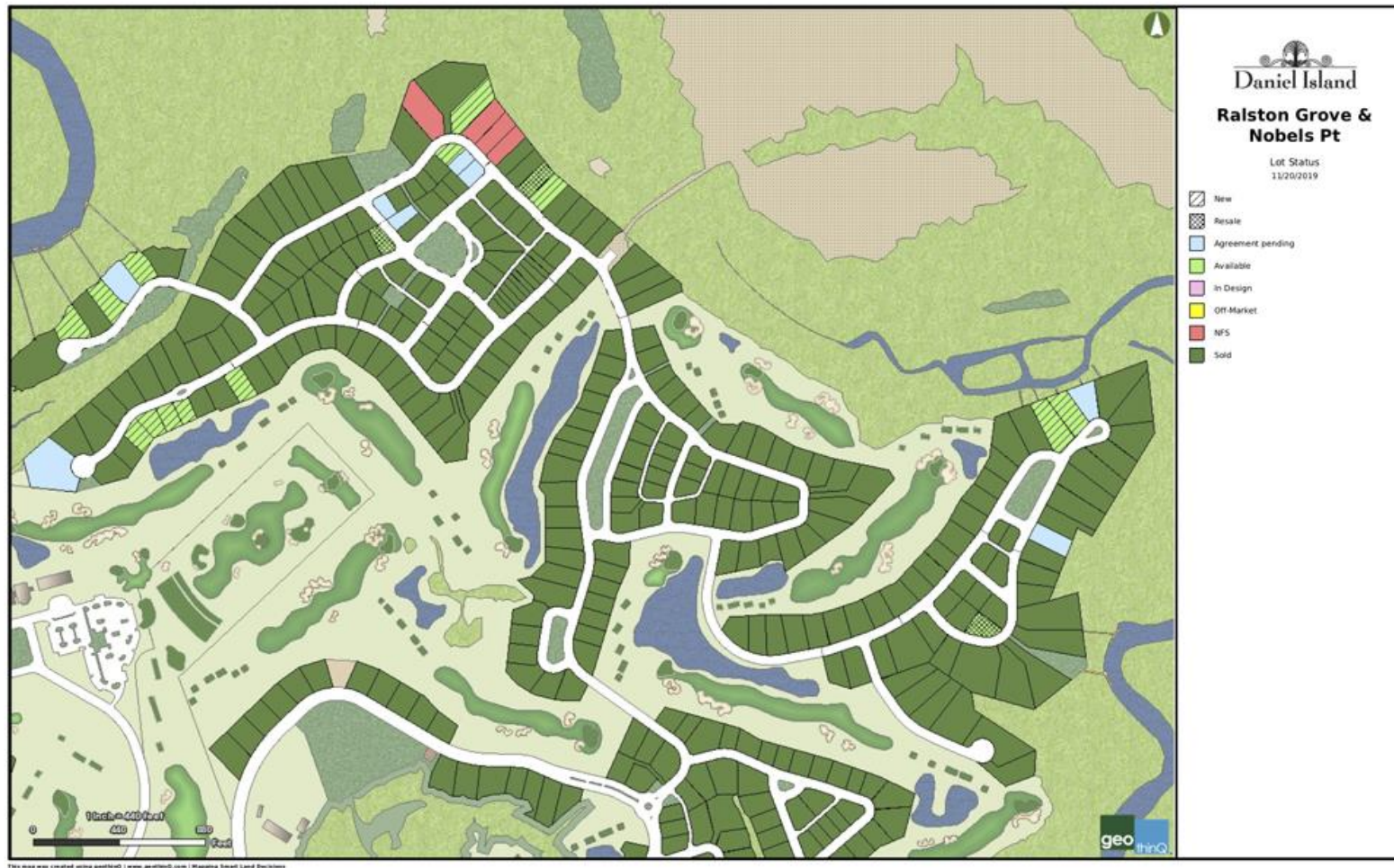
For planning and illustrative purposes only.

DI South – Cochran Park



20 remaining lots

DI Park “Mainland”



17 remaining lots

DI Park – Captain's Island



Phase 1&2 = 64 lots

Phase 3 = 33 lots

DI Park – Final Development Parcel



Parcel FF = 80 acres / 62 homesites: At less than one unit per acre, this is the lowest density residential development on Daniel Island

DI Development Company

Matt Sloan, President

matt.sloan@didevco.com

(843) 971-3533