

ELEVATION NOTES	
ARCH ELEV 100'-0"	ENG 05/14/15
MAIN BLDG FINISHED FLOOR C	ARCH 100'-0"
ENG 14'-0"	
SOUTH GARAGE FINISHED FLOOR C	ARCH 11'-0"
ENG 11'-0"	
NORTH GARAGES FINISHED FLOOR C	ARCH 11'-0"
ENG 11'-0"	



1 B Wing-End Elevation (East)
1/8" = 1'-0"

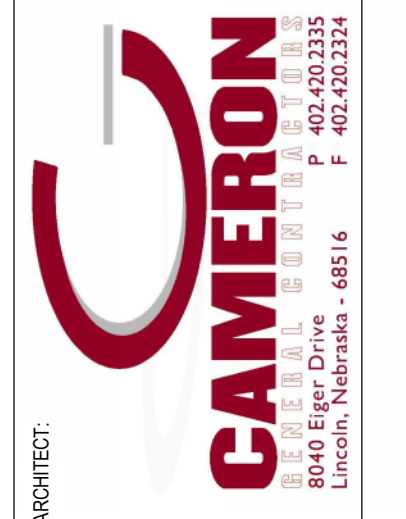


2 B Wing-Street Front Elevation (South)
1/8" = 1'-0"



3 B Wing-Back Elevation (North)
1/8" = 1'-0"

CONSULTANT:



ARCHITECT: PALMETTO CREEK SENIOR LIVING COMMUNITY

514 ROBERT DANIEL DRIVE, DANIEL ISLAND
CHARLESTON, SOUTH CAROLINA

EXTERIOR ELEVATIONS - AREA 'B'

PROJECT NUMBER: 2015
DATE: 02/05/15
COPYRIGHT: CAMERON GENERAL CONTRACTORS 2014

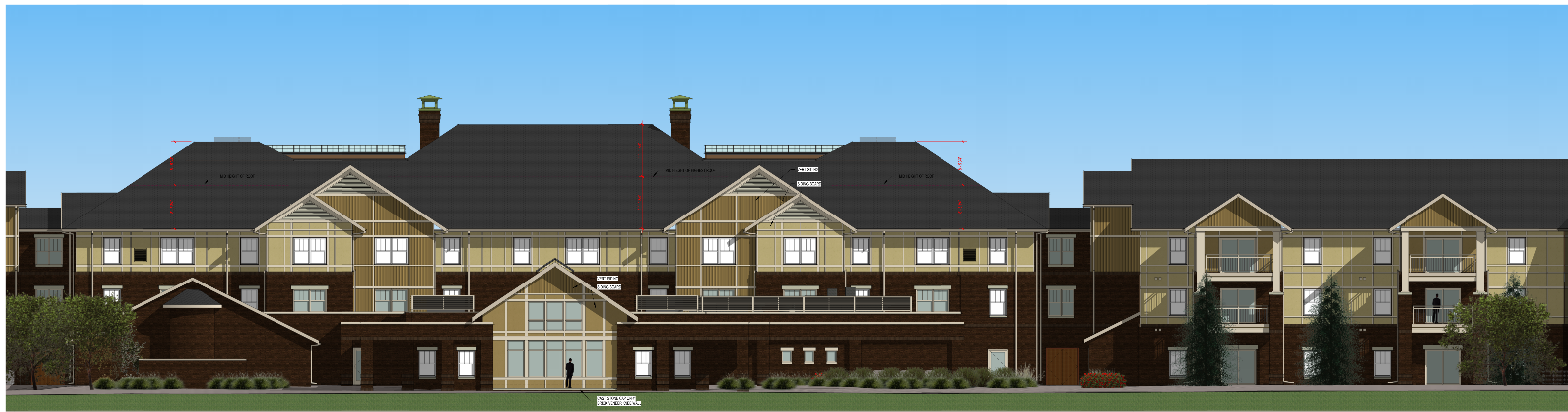
A220B
2/12/2015 1:58:14 PM

MATERIAL FINISH NOTES:
 MATERIAL COLORS TO BE AS FOLLOWS FROM SHERWIN WILLIAMS "COLORS" OF HISTORIC CHARLESTON PALLETTE:
 1. SIDING COLOR 1: SW DORRIS "NAVAH SHEAR"
 2. SIDING COLOR 2: SW DORRIS "WEATHERED STUCCO"
 3. SIDING COLOR 3: SW DORRIS "ROONEY"
 4. WINDOWS, LOUVERS, PORCH RAILINGS, SIDING TRIM AND BATTEN STRIPS: SW DORRIS "MINT BETTY'S CHINA"
 5. FASCIA, GUTTERS, DOWNSPOUTS, COLUMN TRIM: SW DORRIS "OYSTER SHELL"
 6. BRICK: TBD FROM LOCALLY AVAILABLE BROWN PALLETTE (BORAL BRICKS; CAMBERLAND QUEEN SHOWN AT A8B MTG)
 7. ASPHALT SHINGLES: TBD FROM MEDIUM GRAY PALLETTE

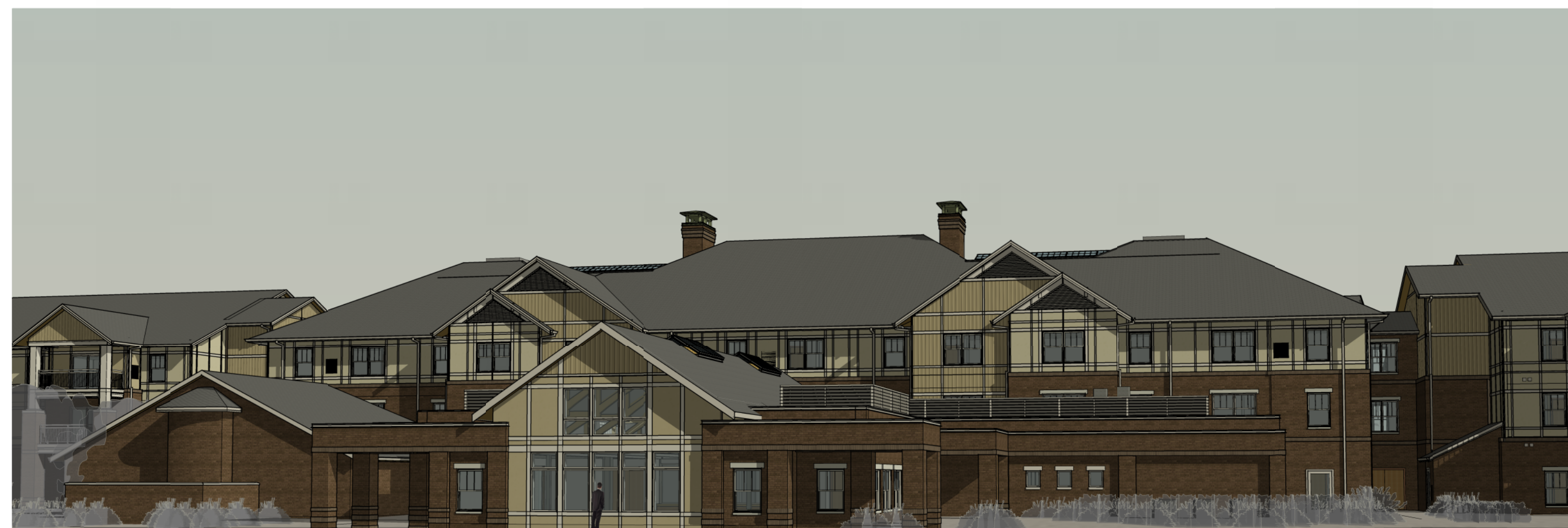
ELEVATION NOTES:
 ARCH ELEV 100' 0" +
 ENG ELEV 14' 2"
MAIN BLOCK FINISHED FLOOR +
 ARCH 100' 0"
 ENG 14' 2"
SOUTH GARAGE FINISHED FLOOR +
 ARCH 97' 0"
 ENG 11' 0"
NORTH GARAGES FINISHED FLOOR +
 ARCH 97' 0" 1/2"
 ENG 11' 3"



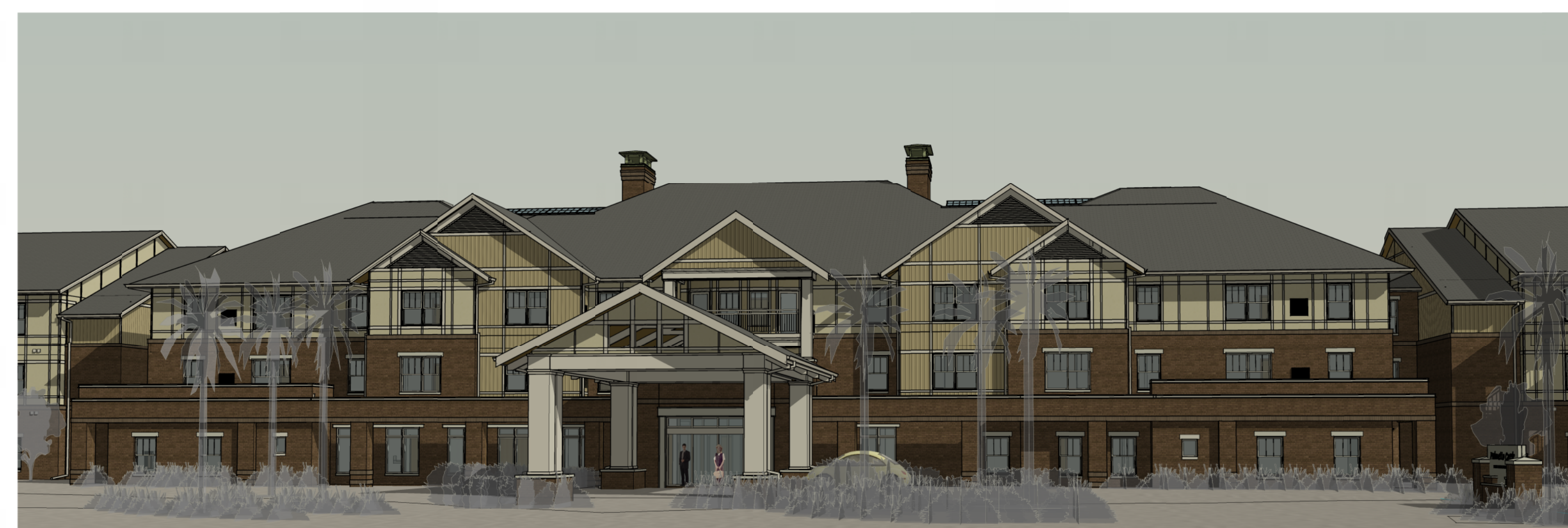
1 Core-Street Front Elevation (South)
 1/8" = 1'-0"



2 Core-Back Elevation (North)
 1/8" = 1'-0"



4 *3D-EXT-Core-Back



3 *3D-EXT-Core-Street View

CONSULTANT:



ARCHITECT:

PALMETTO CREEK SENIOR LIVING COMMUNITY
 514 ROBERT DANIEL DRIVE, DANIEL ISLAND
 CHARLESTON, SOUTH CAROLINA
 EXTERIOR ELEVATIONS - CORE

PROJECT NUMBER: 2015
 DATE: 02/05/15
 COPYRIGHT: CAMERON GENERAL CONTRACTORS 2014

A220C

2/12/2015 1:58:23 PM